

INSPIRATION

The new National Museum sits as a jewel, a 'beacon of light', full of life and hidden complexity.

It quietly but confidently asserts itself on the bay, a modern counterpart to the Town Hall and the Castle.

The new building creates an important new public place where new landscaped spaces flow around and through it. The building brings light, life and uplifts the spirit.

It is an ethereal, luminous and lustroous statement of northernness.

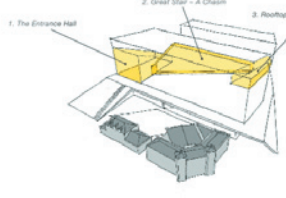


SITE CONCEPT

Completing the Aase Brygge project, it creates new routes and routes across the site linking important places in the city. The museum brings a sense of order to this part of the city. The urban block divides to create a new street bringing the site with natural light, public space and access for the pedestrian.

Public space influences every aspect of the design and offers the visitor new viewing opportunities onto the city at large. The design is integrated into the major public spaces and routes around the site.

New public spaces in the form of terraces, gardens courts, a new street and new urban squares are integrated into the urban block. These spaces become the scene for art events, particularly sculpture, as well as events, gathering points and outdoor cafe seating areas.



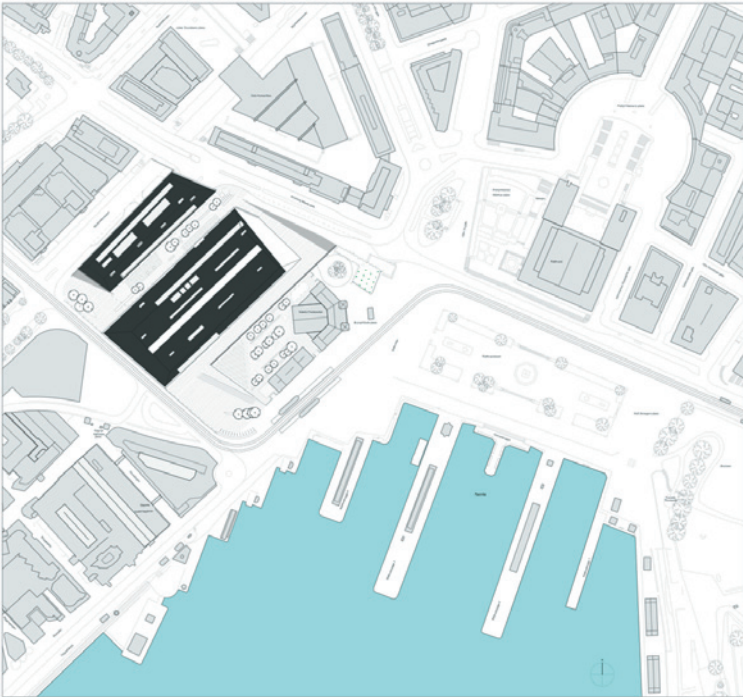
BUILDING ORGANISATION - 3 SPACES

1. The Entrance Hall
A gathering space, opens up to the north and south and is the primary space of the building. All public activities begin and end here.

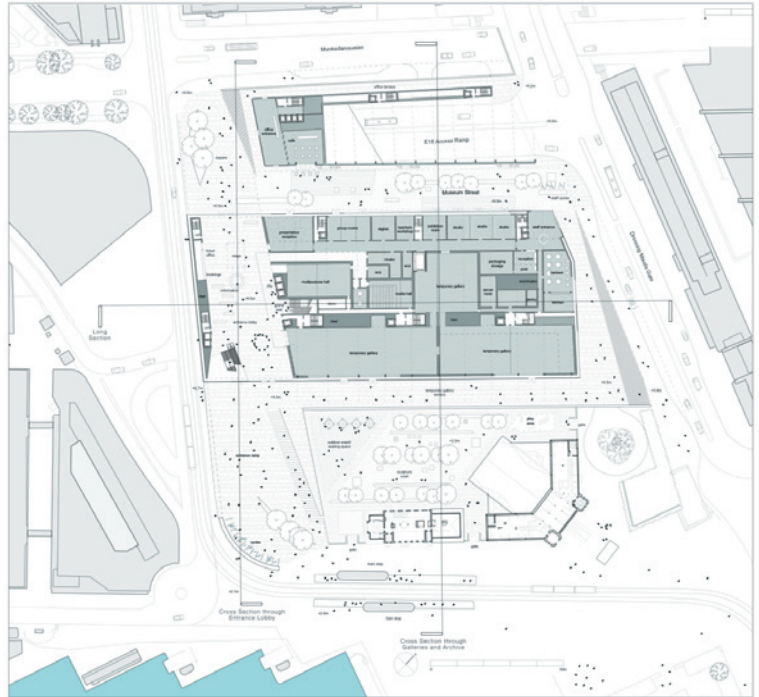
2. Great Stair - A Chasm
The Great Stair is set within a dramatic top-lit space, accessed directly off the entrance hall. It is a line of connection to all the museum's public areas - a space reflecting the vertical strata of floors.

Reassurances of scale the extent of the museum experience for the visitor - a clear orientation space that is easy to understand. At each level of the museum, the Grand Stair offers an enabled landing area with seats, orientation spaces, and entrance lobbies to the specific floor.

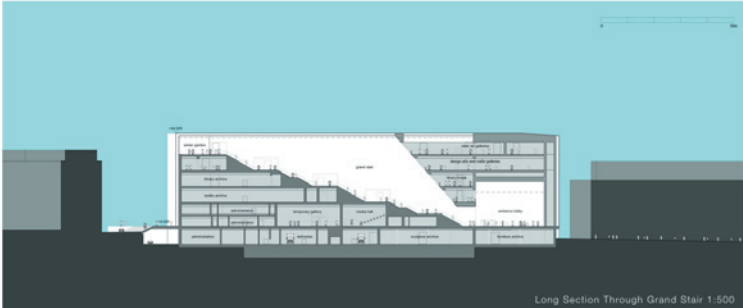
3. Rooftop Sculpture Garden
The Grand Stair ends at the far north side of the building in a glazed room - a wintergarden for the display of sculpture. The lightness of the stair gives way to the panorama of the city.



Location Plan 1:1000



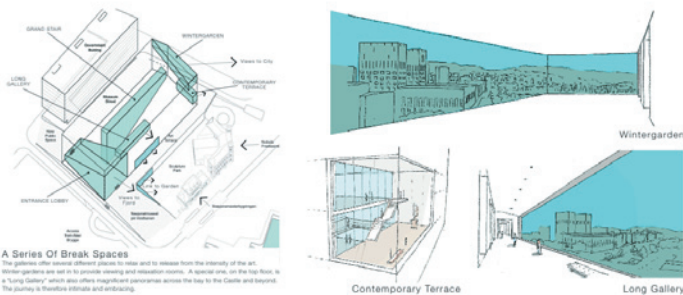
Entrance Level +1:1500



Long Section Through Grand Stair 1:500



Elevation To Pipervika 1:500



A Series of Break Spaces

The main entrance hall is the architectural heart of the museum, and the beginning of the 'journey' for the visitor to the museum collections. It acts as a public forum, a gathering space, meeting place and a place of exhibition. It also visually connects the Grand and the castle.

Contemporary Terrace

Long Gallery



Entrance Lobby



The Grand Stair

The Great Stair is set within a dramatic top-lit space, accessed directly off the entrance hall. It is a line of connection to all the museum's public areas but also a space reflecting the vertical strata of floors.



New Public Square to Munkedamsveien

This space could become a delightful 'winter garden' room to calm the museum and the offices - a winter room for the city which can provide more activity, vibrancy and which would substantially increase the energy efficiency of the building.