

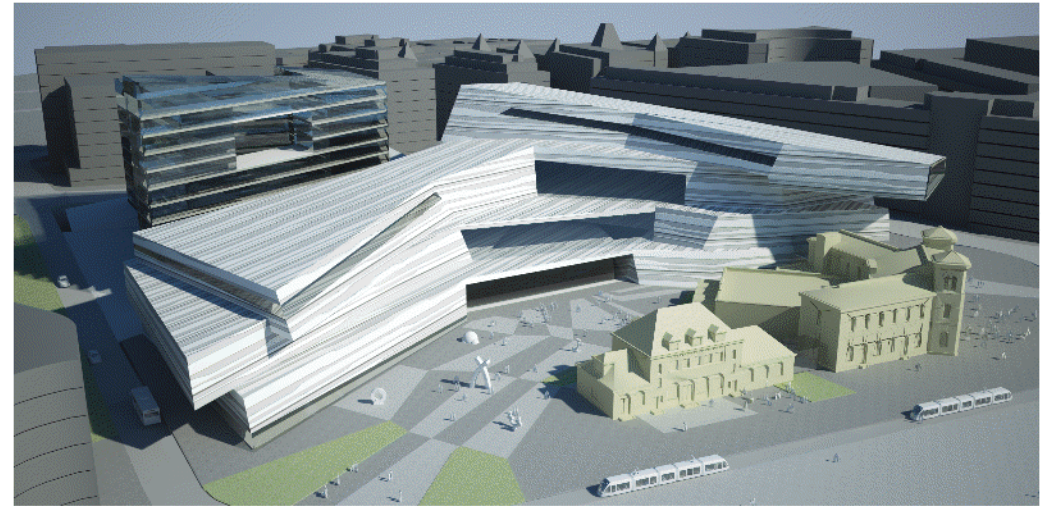
NATIONAL MUSEUM OF ART - NORWAY
PLANNING & DESIGN COMPETITION
THE VESTBANEN LAYERED SPACES
 NATIONAL MUSEUM OF ART, ARCHITECTURE & DESIGN - OSLO

THE TRAJECTORY OF PEOPLE FLOWS, ALONG THE EXISTING MAIN DIRECTIONS AND THE URBAN FUNCTIONALITY OF THE SURROUNDING ZONES HAVE FORMED URBAN STRUCTURE WHICH CREATES A GUIDELINE FOR THE NEW BUILDING FORM. THIS MAIN AXIS HOLDS OTHER DEVIATIONS LEADING TO NUMEROUS CHARACTERISTIC INTERNAL YARDS - WEATHERPROOF AND FULL OF PLANTS. THE RESULT - SQUARE-LIKE FORM PLAYS TOGETHER WITH SAME NEIGHBOURING FRONT COASTAL LINE OR OTHERS SITUATED IN THE NEXT URBAN PLANE.

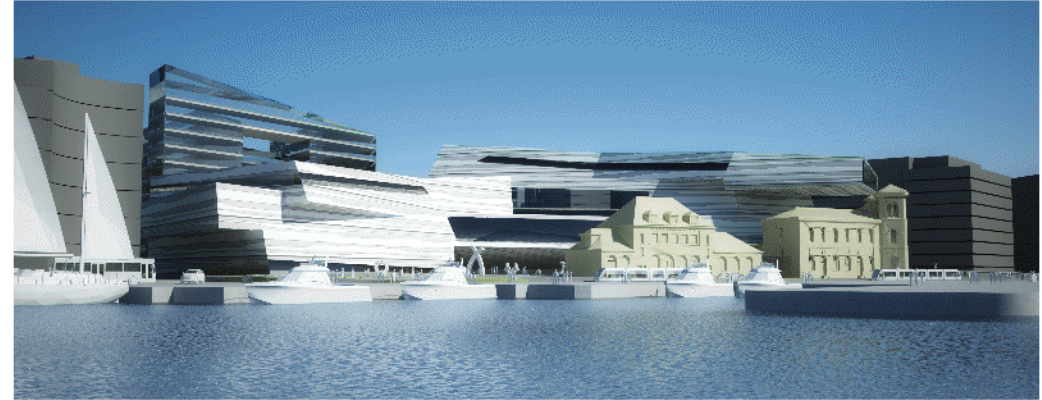
THE MAIN LOCAL BAYS FORMING THE CHARACTERISTIC FIORD SHAPE OF THE TERRITORY HAVE BEEN SELECTED STUDYING THE GEOGRAPHICAL OUTLINES OF OSLO FIORDSCAPE. AGES OF EARTH'S GEOLOGICAL DEVELOPMENT SHOULD BE INVOLVED IN THIS PARTICULAR REGION. THE NUMEROUS BAYS OR OTHER COASTLINES "POCKETS" SITUATED ALONGSIDE THE WATER TRAFFIC, DETERMINE A CERTAIN PERCEPTION AND LONGTERM MEMORY. THIS NATURAL DIRECTION TO THE HOME OSLO BAY TAKES PART IN THE EXPECTED IDENTIFICATION OF THE WHOLE FRONT CITYSCAPE AND ALSO "GAPS" NEXT TO IT IN THIS HUMAN ERRECTED MATTER. THE OUTDOOR AREA GIVES A VIEWING DEPTH FOLLOWED BY THE LAYERED VOLUMES OF THE NEW BUILDING.

THE TRACING OF MAIN CHARACTERISTIC COASTLINES AND THEIR SPACIAL CLASSIFICATION HAS FORMED CERTAIN VIBRATING IDENTIFICATION STRUCTURES. ORIGINATING FROM A ONE WELL KNOWN GEOLOGICAL PROCESS - FIORD SCAPING - THEY SEEM TO BE CONNECTED IN 3 DIMENSIONAL STRUCTURE, CARRYING SIMULTANEOUSLY THE LOCAL MEMORY OF EACH SINGLE PART.

THE NATIONAL MUSEUM COMPLEX TOGETHER WITH THE OLD RAILWAY, HALLS EMERGE IN AN INTERSECTING SPACE, BOTH IN PHYSICAL AND PHILOSOPHICAL SENSE, SECURING A FRIENDLY PRESENCE DETERMINED BY THESE LEADING PRINCIPLES. THEY START TO WORK TOGETHER ONLY WHEN JOINED INTO PARTS OF A "TIME & SPACE" SPIRAL AS LAYERS OF INFORMATION, SHAPE, MEMORY, FORM. THE PROCESS OF LAYERING ITSELF HAS FORMED THE PRINCIPLES OF THE NEW ORGANISM. ORGANISM WHICH IS LIVE PARTICLE OF ITS LOCALITY, WELCOMING OR SOCIALIZING ANY INDIVIDUALS, "LOCK & LOAD" READY... AND CERTAINLY IT'S NOT ONLY LAYERING OF SHAPES. WE SHOULD ADD SOME ADDITIONAL INVISIBLE LAYERS, CALL IT... LAYERED SPHERES, LAYERED SPACES, LAYERS OF COMMON & SINGLE IDENTIFICATION.



REFERENCED VIEWPOINT 4.7.1



REFERENCED VIEWPOINT 4.7.2

